

# Rolfe East



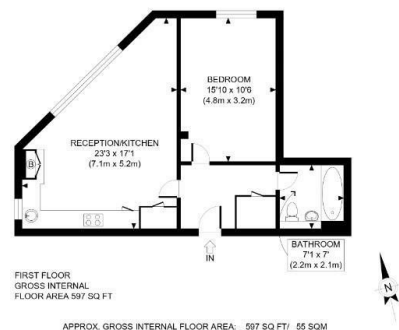
Prince Regent Road, Hounslow, TW3 1NE

£375,000

- Brand new development
- Lift servicing all floors
- One bedroom
- High Spec finish
- Moments from Piccadilly line
- Lovely kitchen
- Large balconies
- Close to shops

289 Northfield Avenue, Ealing, W5 4XB  
020 8579 1111

northfields@rolfe-east.com  
<https://www.rolfe-east.com/>



Rolfe East

This plan is for illustrative purposes only and should be used as such by any prospective client. Whilst every attempt has been made to ensure the accuracy of the Floor Plan contained here, measurements of the doors, windows, rooms and any other items are approximate and no responsibility is taken for any errors, omissions, or misstatement. The services, systems and appliances shown have not been tested and no guarantee as to the operability or efficiency can be given.

PROPERTY PHOTO PLANS

## Directions

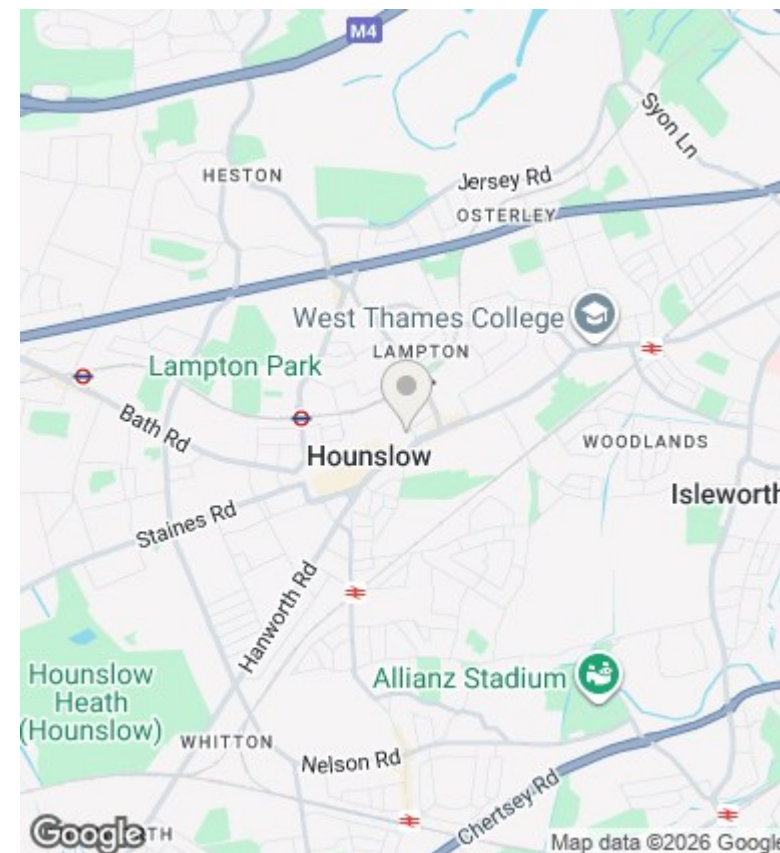
## Viewings

Viewings by arrangement only. Call 020 8579 1111 to make an appointment.

## Council Tax Band

New Build

## EPC Rating:



Energy Efficiency Rating		
	Current	Potential
Very energy efficient - lower running costs		
(92 plus) A		
(81-91) B		
(69-80) C		
(55-68) D		
(39-54) E		
(21-38) F		
(1-20) G		
Not energy efficient - higher running costs		
England & Wales	EU Directive 2002/91/EC	